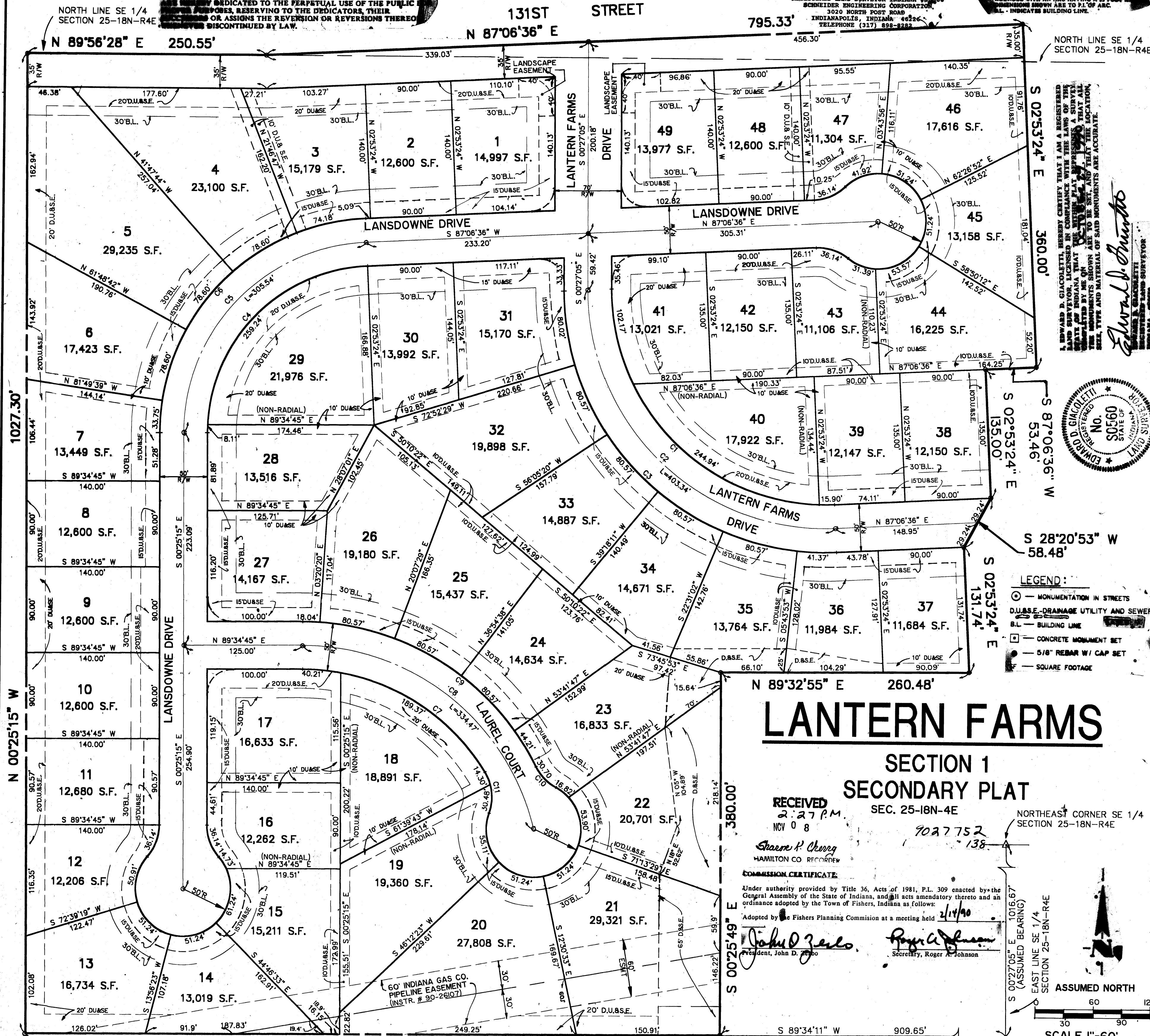


THE STREETS, TOGETHER WITH ALL EXISTING AND FUTURE PLANTINGS AND SHROUBS THEREON, AS SHOWN ON THE ATTACHED PLANS ARE HEREBY DEDICATED TO THE PERPETUAL USE OF THE PUBLIC FOR HIGHWAY PURPOSES, RESERVING TO THE DEDICATORS, THEIR HEIRS OR ASSIGNS THE REVERSION OR REVERSIONS THEREOF TO BE DISCONTINUED BY LAW.

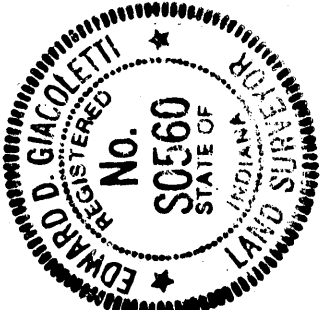
THIS INSTRUMENT WAS PREPARED BY EDWARD D. GIACOLETTI REGISTERED LAND SURVEYOR - INDIANA #50560 SCHNEIDER ENGINEERING CORPORATION, 3020 NORTH POST ROAD INDIANAPOLIS, INDIANA 46226 TELEPHONE (317) 898-8882

PROPERTY LINES AT STREET INTERSECTIONS ARE BOUNDARIES WITH AN ARC HAVING A 25 FOOT RADIUS UNLESS OTHERWISE NOTED. DIMENSIONS SHOWN ARE TO P.I. OF ARC. ALL DIMENSIONS INDICATE BUILDING LINE.



I, EDWARD D. GIACOLETTI, HEREBY CERTIFY THAT I AM A REGISTERED LAND SURVEYOR LICENSED IN COMPLIANCE WITH THE LAWS OF THE STATE OF INDIANA. THAT THE WITHIN PLAT REPRESENTS A SURVEY MADE BY ME ON 11/17/90. THAT THE MONUMENTS SHOWN ARE TO BE SET, AND THAT THE LOCATION, SIZE, TYPE AND MATERIAL OF SAID MONUMENTS ARE ACCURATE.

Edward D. Giacoletti
 REGISTERED LAND SURVEYOR
 INDIANA - 50560



- LEGEND:**
- MONUMENTATION IN STREETS
 - D.U.S.E. DRAINAGE UTILITY AND SEWER
 - B.L. BUILDING LINE
 - CONCRETE MONUMENT SET
 - 5/8" REBAR W/ CAP SET
 - SQUARE FOOTAGE

LANTERN FARMS

SECTION 1 SECONDARY PLAT

RECEIVED 2:27 P.M. NOV 08 SEC. 25-18N-4E
 9027752
 138

Sharon P. Cherry
 HAMILTON CO. RECORDER

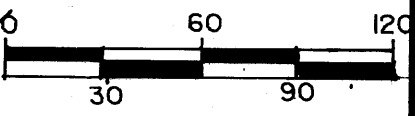
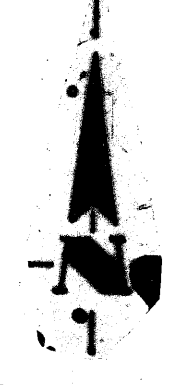
COMMISSION CERTIFICATE:

Under authority provided by Title 36, Acts of 1981, P.L. 309 enacted by the General Assembly of the State of Indiana, and all acts amendatory thereto and an ordinance adopted by the Town of Fishers, Indiana as follows:

Adopted by the Fishers Planning Commission at a meeting held 2/14/90
John D. Zullo President, John D. Zullo
Roger A. Johnson Secretary, Roger A. Johnson

NORTHEAST CORNER SE 1/4 SECTION 25-18N-R4E

S 00°27'00" E 1016.67' (ASSUMED BEARING)
 EAST LINE SE 1/4 SECTION 25-18N-R4E



CURVE DATA TABLE

CURVE	RADIUS	LENGTH	TANGENT	CHORD	BEARING	DELTA
C1	225.00'	363.01'	234.79'	324.90'	S 46°40'15" E	92°26'19"
C2	250.00'	403.34'	260.87'	361.00'	S 46°40'15" E	92°26'19"
C3	275.00'	443.67'	286.96'	397.10'	S 46°40'15" E	92°26'19"
C4	175.00'	267.35'	167.62'	242.10'	S 43°20'40" W	87°31'51"
C5	200.00'	305.54'	191.56'	276.68'	S 43°20'40" W	87°31'51"
C6	225.00'	343.73'	215.51'	311.27'	S 43°20'40" W	87°31'51"
C7	225.00'	229.58'	125.91'	219.75'	N 61°11'25" W	58°27'39"
C8	250.00'	334.47'	197.64'	310.08'	N 52°05'35" W	76°39'21"
C9	275.00'	303.96'	169.61'	288.73'	N 58°45'20" W	63°19'49"
C10	50.00'	30.70'	15.85'	30.22'	S 44°40'56" E	35°11'2"
C11	50.00'	44.78'	24.02'	43.30'	N 06°18'04" W	51°19'4"

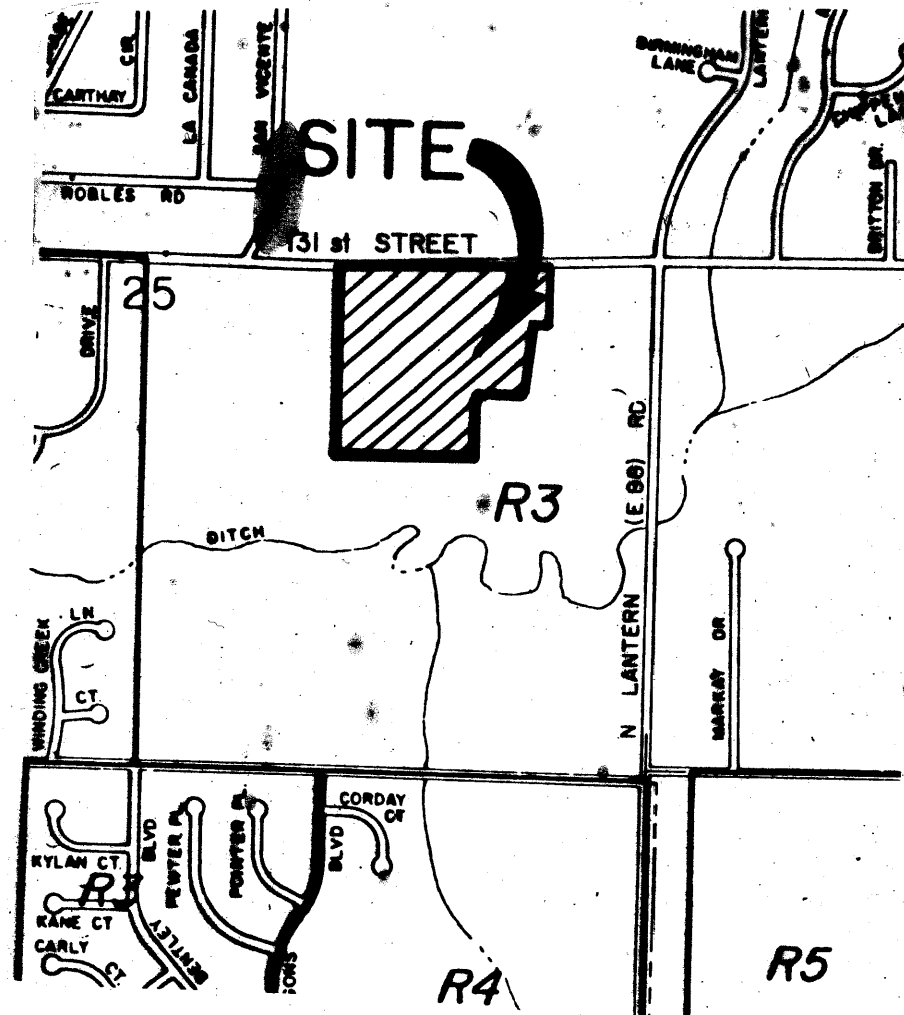
THIS INSTRUMENT WAS PREPARED
BY EDWARD D. GIACOLETTI
REGISTERED LAND SURVEYOR-INDIANA #S0560
SCHNEIDER ENGINEERING CORPORATION
3020 NORTH POST ROAD
INDIANAPOLIS, INDIANA 46226
TELEPHONE (317) 898-8282

LANTERN FARMS

SECTION 1
SECONDARY PLAT
PART OF
SECTION 25-18N-4E
HAMILTON COUNTY, INDIANA

SUBDIVIDER/OWNER

THOMPSON LAND COMPANY
11911 LAKESIDE DRIVE
FISHERS, INDIANA 46038
(317) 849-7607



AREA MAP

LAND DESCRIPTION

I HEREBY CERTIFY THAT THE WITHIN PLAT IS A REPRESENTATION OF THE LANDS SURVEYED, SUBDIVIDED AND PLATTED UNDER MY DIRECT SUPERVISION AND CONTROL AND THAT IT IS TRUE AND CORRECT TO THE BEST OF MY KNOWLEDGE AND BELIEF:

A part of the North Half of the Southeast Quarter and a part of the South Half of the Northeast Quarter of Section 25, Township 18 North, Range 4 East in Hamilton County, Indiana, being more particularly described as follows:

Commencing at the Northeast corner of said Southeast Quarter Section; thence South 00 degrees 27 minutes 05 seconds East (Assumed Bearing) along the East line of said Southeast Quarter Section a distance of 1016.67 feet; thence South 89 degrees 34 minutes 11 seconds West a distance of 909.65 feet to the Beginning Point; thence continuing South 89 degrees 34 minutes 11 seconds West a distance of 730.16 feet; thence North 00 degrees 25 minutes 15 seconds West a distance of 1027.30 feet to the North line of said Southeast Quarter Section; thence North 89 degrees 56 minutes 28 seconds East along the said North line a distance of 250.55 feet; thence North 87 degrees 06 minutes 36 seconds East a distance of 795.33 feet; thence South 02 degrees 53 minutes 24 seconds East a distance of 360.00 feet; thence South 87 degrees 06 minutes 36 seconds West a distance of 53.46 feet; thence South 02 degrees 53 minutes 24 seconds East a distance of 135.00 feet; thence South 28 degrees 20 minutes 53 seconds West a distance of 58.48 feet; thence South 02 degrees 53 minutes 24 seconds East a distance of 131.74 feet; thence South 89 degrees 32 minutes 55 seconds West a distance of 260.48 feet; thence South 00 degrees 25 minutes 49 seconds East a distance of 380.00 feet to the Beginning Point, containing 21.904 acres, more or less.

This subdivision consists of 49 lots, numbered 1 through 49, together with streets, easements and public ways as shown on the within plat.

The size of lots and widths of streets and easements are shown in figures denoting feet and decimal parts thereof.

WITNESS MY SIGNATURE THIS 29TH DAY OF OCTOBER, 1990.

Edward D. Giacoletti
EDWARD D. GIACOLETTI
REGISTERED LAND SURVEYOR - INDIANA #S0560



COMMISSION CERTIFICATE:

Under authority provided by Title 36, Acts of 1981, P.L. 309 enacted by the General Assembly of the State of Indiana, and all acts amendatory thereto and an ordinance adopted by the Town of Fishers, Indiana as follows:

Adopted by the Fishers Planning Commission at a meeting held 2/14/90

John D. Zerbo
President, John D. Zerbo

Roger A. Johnson
Secretary, Roger A. Johnson

9027752
138

RECEIVED
2:27 P.M.
NOV 08 1990
Shaun P. Cherry
HAMILTON CO. RECORDER

